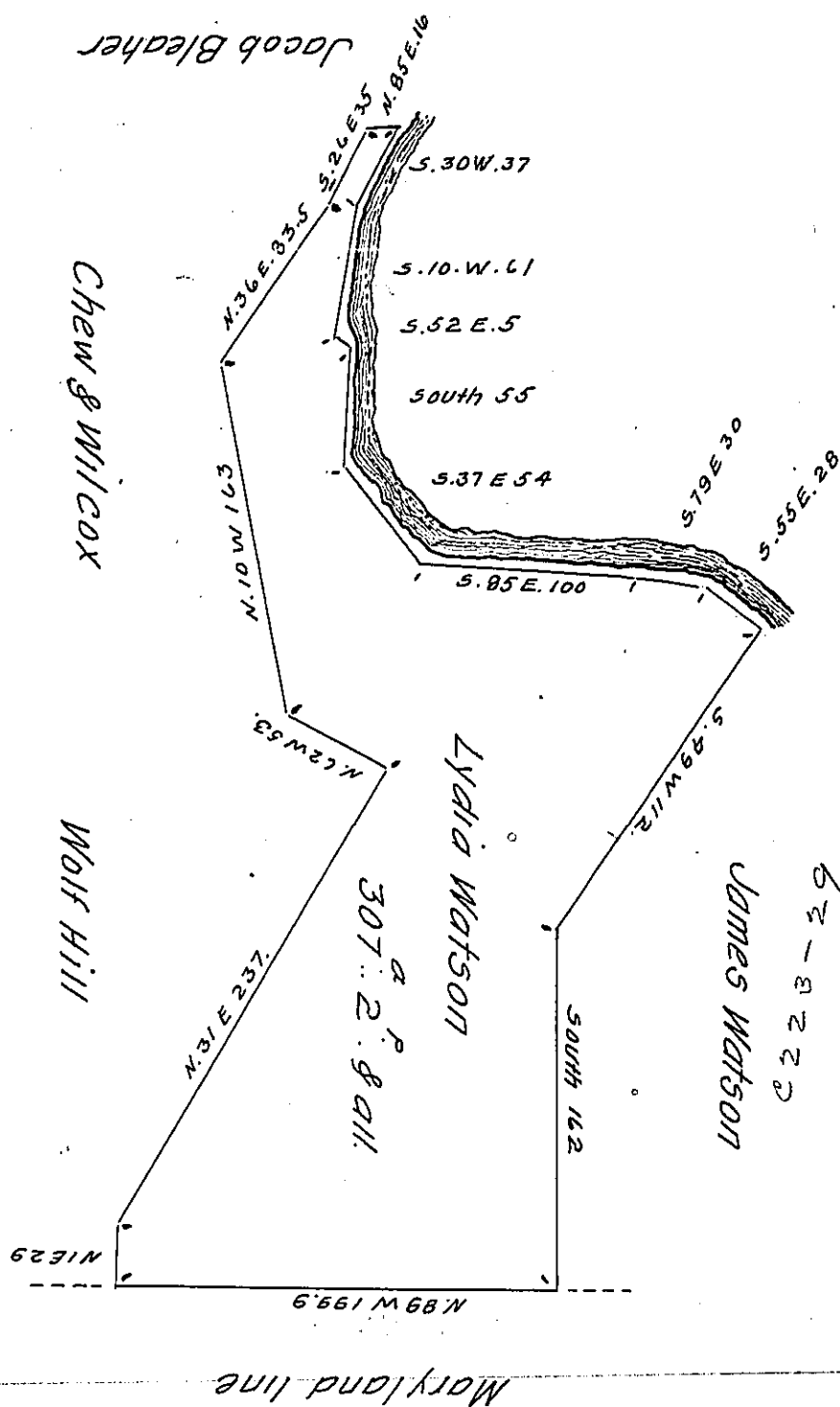


FORM No. 1.



Situate on Yough-river above Smithfield & adjoining the Maryland line in Wharton township Fayette County and Surveyed the - day of - 1819 In pursuance of a Warrant dated the Eighth of September A.D. 1794.

To Jacob Spangler pr. Moses McClean  
S.G. ass. Deputy Surveyor

I hereby certify the above to be a true copy of a Survey as entered on the Book in my office at Union town. Given under my hand this 3<sup>d</sup> day of September A.D. 1850.

James Snyder D.P.S.

IN TESTIMONY that the above is a copy of the original remaining on file in the Department of Internal Affairs of Pennsylvania, made conformably to an Act of Assembly approved the 16th day of February 1833, I have hereunto set my hand and caused the Seal of said Department to be affixed at Harrisburg, this thirtieth day of October 1907.

*Henry Howard*  
Secretary of Internal Affairs.